

Towards a Competence Center supporting
the LIFEWATCH User Community:

LIFEWATCH CC in EGI-ENGAGE

presented by J.Marco, IFCA
JRU-LW-ES meeting
25 Feb 2015, Málaga



- LifeWatch and EGI have collaborated since long time
Interest established in LW core-ICT meeting in Granada in February 2014, confirmed in Brussels in May 2014
- LW will use existing services and promote the integration of the e-Infrastructure in EGI:
 - LW core-ICT team will integrate grid/cloud resources in EGI
 - Pilot activities with EGI support have been started:
 - LW VOMS deployment
 - Exploration of successful examples in EGI FedCloud and in the context of the DCC activity
 - Phenology use case (Univ. of Granada)
 - Several Initiatives on Biodiversity in cooperation with Brazil (EUBrazilOpenBio)



LW Competence Center



EGI-LifeWatch Competence Centre

Call for Competence Centres

for inclusion in the EGI-Engage proposal, Call 3, EINFRA-1, Activity 6

Mail to: cc-call@mailman.egi.eu

Deadline for submission: 04 July, h 24:00 CEST

Proposal presented by
I.Blanquer & J.Marco

- **Objective 1- Adoption and exploitation of the EGI infrastructure by the LifeWatch user community**, reach users through dissemination of LifeWatch in EGI and assist them along the path of enrolment, learning and exploitation.
- **Objective 2-** Deploy the tools required to support **data management, data processing and modeling for Ecological Observatories** in the framework provided by EGI.eu.
- **Objective 3-** Integrate, and as necessary develop, on the EGI **FedCloud** framework, the services required **to support workflows** oriented to the deployment of Virtual Labs for LifeWatch.
- **Objective 4-** Support to the **direct participation of citizens** in LifeWatch contributing observation records, in particular those **including sounds or images uploading and processing**.

TASK 1 Support to LifeWatch Community and Exploitation

- T1.1 Connection of Project Management tools
- T1.2 Implementation of common support tools.
- T1.3 Deployment and operation of a support and training platform
- T1.4 Definition of a dissemination and exploitation strategy

TASK 2 Big Data and Ecological Observatories

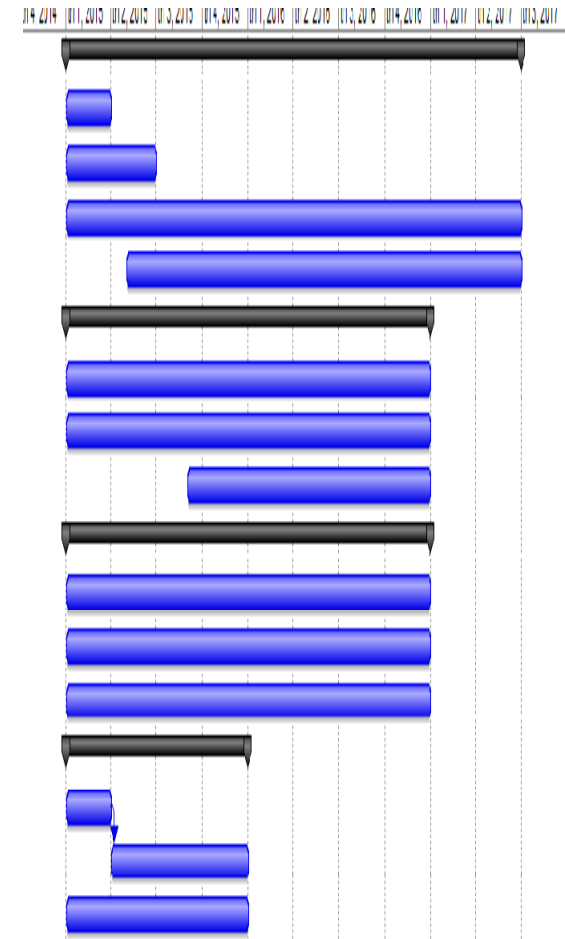
- T2.1 Handling Data Streams from Ecological Observatories
- T2.2 Supporting large software suites for Modelling Ecosystems
- T2.3 Towards an integrated framework

TASK 3 Supporting Workflows & Virtual Labs in FedCloud for LifeWatch

- T3.1 Integration of popular Bioinformatic interfaces
- T3.2 An extensible framework for executing biodiversity pipelines
- T3.3 Implementation of the Network of Life

TASK 4 Advanced Support to Citizen Science in Biodiversity

- T4.1 Updated analysis of ongoing initiatives on nature observation
- T4.2 Exploration of pattern recognition tools
- T4.3 Engagement: outreach and inreach.



Participant No *	Participant organisation name	Role in the CC (user community/technology provider/service provider)
1 (Coordinator)	JRU-NGI-ES	Service Provider
2	JRU-LW-ES	Service Provider/User Community
3	NGI-PT (LIP)	Service Provider
4	NGI-FR (CNRS,INRA)	Service Provider/User community
5	NGI-IT (INFN)	Service Provider/User community
6	Flanders Marine Institute, VLIZ, Belgium	User Community
7	Research Centre on Biodiversity & Genetic Resources, CIBIO, Portugal	User Community

Task 1: Support to LifeWatch Community and Exploitation

- LifeWatch is implementing a comprehensive process to **support** its developers, operation and end-users
- *The LifeWatch support to end-users is handled through a Service Center being established in Lecce*
- The Lifewatch CC in EGI will connect a support team in EGI, operated by IBERGRID (NGI-ES and NGI-PT) and the core-ICT team in LifeWatch, with the communities of developers and end-users, in particular for the integration, operation and monitoring of new applications and services.
- This connection will be established at different levels:
 - **Full lifecycle support for application projects, including: a register of projects, documentation, incidents and evolution management.**
 - General forum for discussion of evolution, new ideas, and to gather feedback, implemented using communication tools and complemented with workshops.
 - *Training platform, including hands-on exercises, user guides, webinars and on-line specific courses*

Description of work

Task 2.1 (UGr as JRU-LW-ES, VLZ as LW-BE, NGI-FR, CIBIO as LW-PT) Handling Data Streams from Ecological Observatories: Flanders Marine Ship (BE), Mountain Observatory in Sierra Nevada (ES), Life under natural radiation (ZATU, FR), Lakes and Water Reservoirs (Sanabria Lake and Cdp Water Reservoir, ES)

Task 2.2 (CSIC as JRU-LW-ES) Supporting large software suites for Modelling Ecosystems: Delft3D (on water quality and eutrophication), Community Land Model on Global Carbon.

Task 2.3 (CSIC as JRU-LW-ES) Towards an integrated framework/toolbox at international level including a catalogue of applications and final user interfaces based in R and Python.

Deliverables/milestones (brief description and month of delivery)

D2.1 Proposal for a data flow handler to support integration of the information from Ecological Observatories. Type: Prototype. Due: M6

D2.2 Deployment of basic R tools to process data from Ecological Observatories using HTC/HPC infrastructure available in EGI. Type: Tools+Report Due: M12

D2.3 Support (installation, definition of images and context, connection to HTC/HPC/Data resources) to the execution of simulation packages Delft3D and CLM. Type: Report. Due: M12

D3.4 Report on the applications installed and usage record. Type: Report. Due: M24

Task 3: Supporting Workflows & Virtual Labs in FedCloud for LifeWatch

Task 3.1 Integration of Bioinformatic interfaces and frameworks (Galaxy) on EGI FedCloud

- Adaptation of a Galaxy portal to run jobs on EGI FEdCloud
- Link the public part of INRA's numerical taxonomy database (R-Syst)
- Create a repository of configurations for addressing different Biocomputing problems

Task 3.2 An extensible framework for biodiversity pipelines on EGI Federated Cloud.

- Prototype available through the OpenModeller HTC service developed in EUBrazil OpenBio
- Niche Modelling Service is implemented through the COMPSs programming framework and available in the EGI AppDB.
- COMPSs will be adopted to develop the applications and to optimize their execution, through automatic parallelization techniques, on the EGI Federated Cloud.

Task 3 .3 Implementation of the Network of Life.

- After an analysis of the framework of different standards, protocols and tools available within GBIF, the needs of adaptation/expansion to support species relationship data will be defined.
- Storage and organization needs of geo-referenced information on species interactions, extracted from the primary literature, will be considered.
- The system implemented will be able to build networks of potential interactions, based on the species that have been reported in a given area. Social network algorithms will be used.

Task 4: Advanced Support to Citizen Science in Biodiversity

Task 4.1 (BIFI as NGI-ES + RJB-CSIC as JRU-LW-ES): Updated analysis of ongoing initiatives on nature observation and selection of an example of framework to be supported from the DCC.

There are several initiatives on nature observation that share some of the features we want to use about image/sounds uploading and analysis by the citizens, like for example <http://www.inaturalist.org/>, or <http://www.ebird.org/>. This task will analyse the framework of some of these initiatives and the possibility to integrate them with our objectives. This has the double advantage of reducing the development costs and of using a platform already known by the potential collaborators.

Task 4.2 (BIFI+IFCA as NGI-ES): Exploration of pattern recognition tools that could benefit of EGI resources.

This task will address the technical point of exploring the integration and deployment of pattern recognition tools on EGI specific resources, including for example servers with GPUs or other relevant hardware for image/sound recognition.

Generic tools available in the market at different levels (like existing ones to identify grasshoppers, or bee identification from wing images) will be explored and considered, and an initial pack will be integrated and deployed. Tools considered will range from highly assisted, including support from experts or other citizen scientists, like in the *inaturalist* platform already cited, to fully automated. The results of the analysis will be taken into account to prepare future initiatives addressing the educational level.

Task 4.3 (BIFI + RJB-CSIC): Citizen engagement: outreach and inreach.

This task will deal with attracting and retaining people who would be willing to contribute with their skills, time and effort to the project. This task will rely for sustainability on the collaboration with existing associations with long tradition and experience in the field. Using social networking features, collecting experiences of the collaborators, approaching institutions or involving schools will be some of the instruments to be used, plus actions for further dissemination through workshops, press, etc.

The task will culminate both developments and general public engagement showing and evaluating the outcomes of the citizen science. A public participatory event oriented to bring tools, data and methods to the different stakeholders, in particular general public and younger students, is proposed as a demonstrator of the impact of these actions.

TASK SA2.7 LifeWatch (Lead partner: IFCA, M1 – M30)

- The goal of the LifeWatch EGI CC is to capture and address the requirements of Biodiversity and Ecosystems research communities.
- To achieve this the CC will
 - deploy cloud and GPGPU based e-Infrastructure services required to support data management, data processing and modelling for Ecological Observatories,
 - explore possibilities to increase the participation of citizens in data-intensive biodiversity research,
 - facilitate the adoption and exploitation of the EGI infrastructure by the LifeWatch user community.

Assigned to SA2.7

- **D6.1:** Assisted pattern recognition tools integrated with EGI for citizen science (OTHER, M09)
- **D6.6** Data flow handler and basic R tools to integrate and process data from Ecological Observatories on EGI (DEM, M12)
- **D6.18** Report on the installed LifeWatch applications and their usage record (R, M24)

Related to SA2.1 Training

- **M6.1** Joint training program for the first period is agreed M03
- **M6.5** Joint training program for the sec. period is agreed M15

The proposal prepared in July included:

- A support task from NGIs (ES,PT,IT)
- Two lighthouse projects (24M):
 - **Big Data and Ecological Observatories**
 - **Supporting Workflows & Virtual Labs in FedCloud for LifeWatch**
- A path finding project (12M):
 - **Advanced Support to Citizen Science in Biodiversity**

#	Participant	Role in the CC
1	JRU-NGI-ES	Service Provider
2	JRU-LW-ES	Service Provider/User Community
3	NGI-PT (LIP)	Service Provider
4	NGI-FR (CNRS, INRA)	Service Provider/User community
5	NGI-IT (INFN)	Service Provider/User community
6	VLIZ, Belgium	User Community
7	CIBIO, Portugal	User Community

90 PM requested, EGI-Engage will fund 59 PM

LIFE-WATCH related initiatives will complement in what possible

Spain 32 PM
Portugal 9 PM
Italy 3 PM,
CIBIO 3 PM
VLIZ 6 PM
INRA 6 PM

- Formal Participants in EGI-Engage:
 - IFCA: global coordination and observatories
 - UPV: workflows
 - BIFI: citizen science
- Plan:
 - follow the LW-CC proposal
 - emphasis on EGI-Engage D6.1, D6.6, D6.18
- **KEY: how to involve all relevant JRU-LW-ES partners**
 - **We agreed to support the EGI LW Competence Center**
 - **New related projects: H2020, ...**

- Initial steps:
 - J.Marco and F.Aguilar reviewed proposal
 - Contact with EGI.eu (G.Szypos), EGI
 - Observatories:
 - Meeting with VLIZ (F.Hernandez, January) and OBSN (F.Bonet, February)
 - Workflows:
 - Initial contact with UPV (I.Blanquer)
 - Citizen science:
 - Initial contact with BIFI (F.Martínez)
 - Identified “simple” application: sound recognition
- Next:
 - Discuss with other international LW partners (CIBIO, INRA, ...) this week in Malaga
- **Ready to start on 1st March**

Applied to organize Data management session in EGI Conference 2015 in Lisbon.

